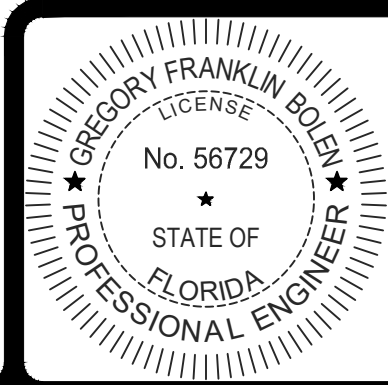


DRC

PZ25-12000024

09/17/2025 5:15 PM Daniel Brunet

DATUM NOTES:
1.) ALL ELEVATIONS SHOWN HEREON ARE RELATIVE TO THE NORTH AMERICAN VERTICAL DATUM (N.A.V.D.) OF 1988 BASED ON A SURVEY PREPARED BY MARTINEZ & MARTINEZ ENTERPRISES, INC. 786-277-4851.
2.) AN APPROXIMATE CONVERSION BETWEEN THE NATIONAL GEODETIC VERTICAL DATUM (N.G.V.D.) OF 1929 AND N.A.V.D. CAN BE MADE BY ADDING 1.572' TO THE N.A.V.D. ELEVATION TO OBTAIN THE N.G.V.D. ELEVATION.



THIS ITEM HAS BEEN DIGITALLY SIGNED AND SEALED BY GREGORY FRANKLIN BOLEN, P.E. ON 8/13/2025.

PRINTED COPIES OF THIS DOCUMENT ARE NOT CONSIDERED SIGNED AND SEALED AND THE SIGNATURE MUST BE VERIFIED ON ANY ELECTRONIC COPIES.

1.) REVISED PER DRC PLAN REVIEW, 08/12/25 D.B.

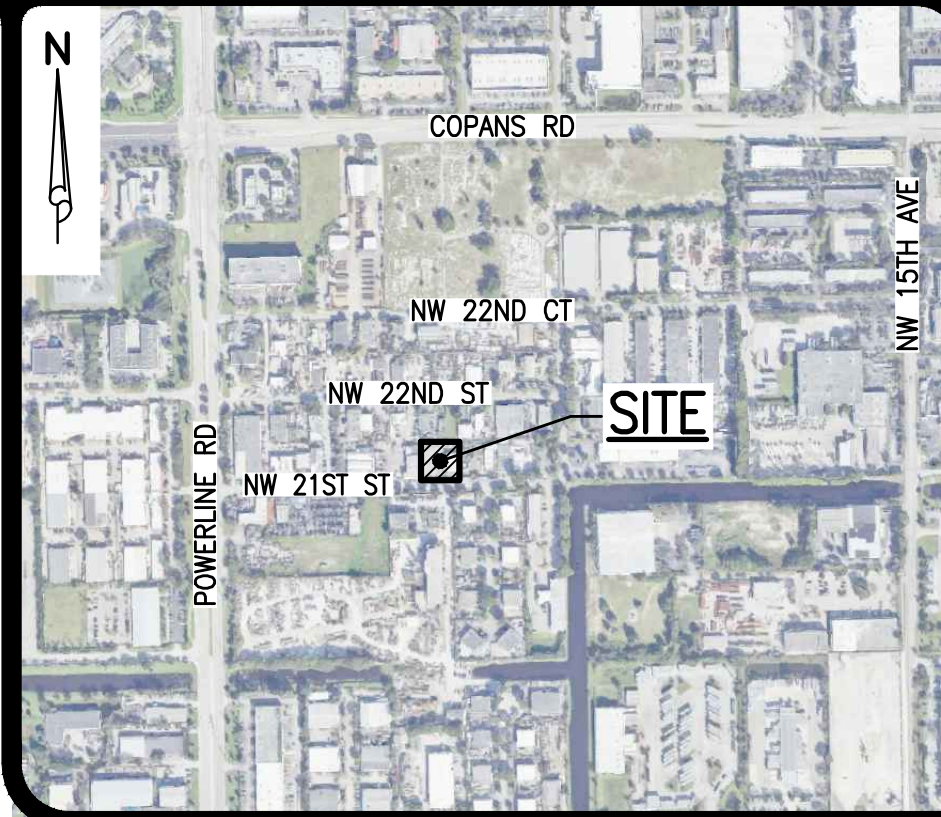
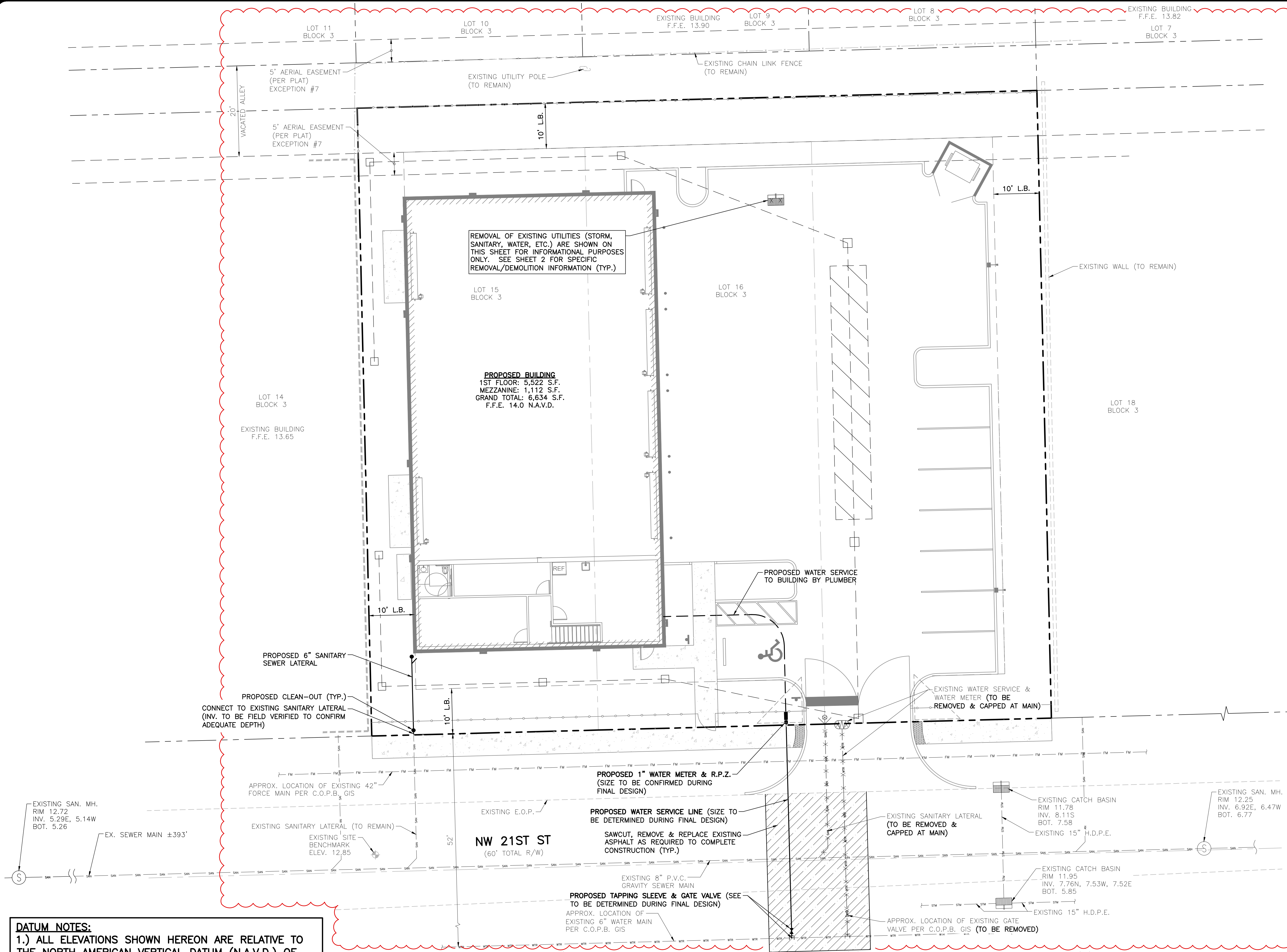
REVISIONS



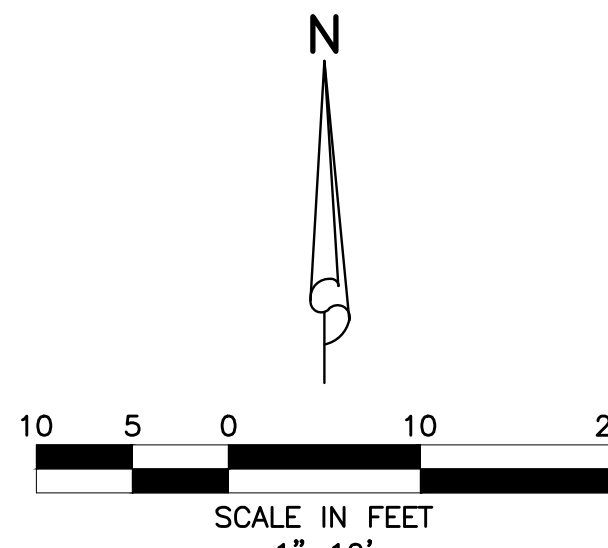
DESIGN C.M.	DRAWN B.L.	CHECKED	APPROVED	DATE
----------------	---------------	---------	----------	------

1857 NW 21ST STREET
HODGE MARINE
SECTION 27, TOWNSHIP 48S., RANGE 42E.
CITY OF POMPAÑO BEACH, FLORIDA
**CONCEPTUAL
WATER AND WASTEWATER PLAN**

JOB NO. 25-093	DRAWING NO. 25093C08	SHEET C-8 OF C-15
-------------------	-------------------------	-------------------------



SECTION 27, TOWNSHIP 48S., RANGE 42E.
LOCATION MAP
NOT TO SCALE



LEGEND

- S1-4' MH.** MANHOLE NUMBER AND TYPE
- MANHOLE TOP ELEVATION
 - MANHOLE INVERT ELEVATION
 - SINGLE SEWER SERVICE W/ CLEAN-OUT
 - DOUBLE SEWER SERVICE W/ CLEAN-OUT
 - SANITARY SEWER LINE, MANHOLE AND DIRECTION OF FLOW
 - FIRE HYDRANT W/ GATE VALVE
 - WATER SERVICE, WATER METER & R.P.Z.
 - WATER MAIN & GATE VALVE
 - GATE VALVE & D.D.C.V. ASSEMBLY
 - SAWCUT, REMOVE, & REPLACE EXISTING ASPHALT, ETC.

NOTES:

- ON-SITE SEWER LATERALS ARE PRIVATELY OWNED AND MAINTAINED.
- CONTRACTOR TO FIELD VERIFY LOCATION AND DEPTH OF ALL EXISTING UTILITIES PRIOR TO CONSTRUCTION AND NOTIFY ENGINEER OF ANY CONFLICTS. IT SHALL BE THE CONTRACTORS RESPONSIBILITY TO COORDINATE ALL EXISTING UTILITY LOCATES, SUPPORT, RELOCATIONS AND NOTIFICATIONS REQUIRED WITH ALL APPLICABLE UTILITY SERVICE PROVIDERS.
- CONTRACTOR TO VIDEO INSPECT EXISTING 6" SANITARY SERVICE TO ENSURE SERVICEABILITY.
- ANY EXISTING WATER AND/OR SEWER CONNECTIONS TO SUBJECT LOTS THAT ARE NOT UTILIZED MUST BE CUT AND CAPPED AT WATER MAIN (IF A WATER SERVICE) OR CUT OUT AND SLEEVED (IF A SEWER LATERAL).